

# NDW Time Help Index

[General Information](#)

[Starting NDW Time](#)

[Closing NDW Time](#)

[NDW Time Options Dialog Box](#)

[NDW Time Error Messages](#)

## **General Information**

The NDW Time program version 2.0 replaces the Batch Builder file that was included with the Norton Desktop for Windows version 1.0. This new NDW Time is a normal Windows executable file now instead of a Batch Builder script and can be run without the Batch Runner being installed. When run, NDW Time attaches the current day, date, and time to the Norton Desktop Title bar. The display is constantly updated every second (or every minute if the user is not displaying seconds). The user has the option of displaying any combination of the current day, current date, or current time.

Some of the new features include:

Faster execution and running.  
No noticeable decrease in system performance.  
Configurable display formats

## **Starting NDW Time**

The NDW Time program can only be used in conjunction with the Norton Desktop For Windows. If the Norton Desktop is not running, the NDW Time program will display an error message.

The NDW Time program can be started in the following methods:

- 1) Double-clicking on an NDW Time icon in a Quick Access group window (The icon must have been previously created by the user).
- 2) Double-clicking on an NDW Time launch button on the desktop (The launch button must have been previously created by the user).
- 3) Double-clicking on the filename NDWTIME.EXE in a Norton Desktop drive window or the Windows File Manager.
- 4) Selecting FILE RUN from the Norton Desktop menu bar and typing NDWTIME.EXE at the Command Line prompt.

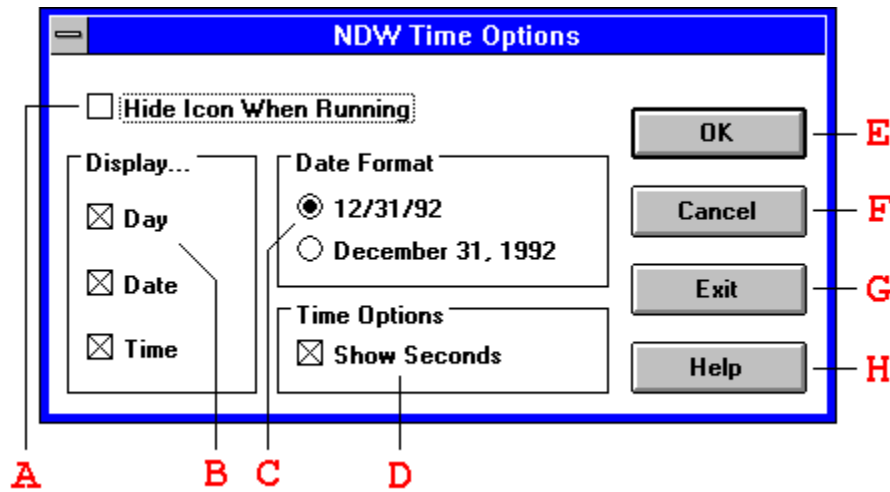
## **Closing NDW Time**

The NDW Time program can be closed at any time which will restore the Norton Desktop title to it's default text. NDW Time will also close if the Norton Desktop is closed while NDW Time is running. Closing NDW Time can be accomplished as follows:

- 1) Click once on the minimized NDW Time icon to display the system menu. Then choose CLOSE.
- 2) Choose the EXIT button from the NDW Time options box. (Note: If the NDW Time icon is hidden, you may bring up the options box by following any of the methods listed in the Starting NDW Time section.

## NDW Time Options Dialog Box

The NDW Time options box allows the configuration of the NDW Time program. It also allows the program to be closed should the minimized icon be hidden.



- (A) **Hide Icon When Running** - This checkbox hides the NDW Time icon while the program is running. If the icon is hidden, using any of the methods of starting NDW Time will bring up the options dialog box again.
- (B) **Display Options** - These boxes define what will be shown on the Norton Desktop title bar. The "Day" box will display the current day of the week. The "Date" box will display the current date. The "Time" box will display the current time. You must check at least one display option.
- (C) **Date Format Selection** - The two radio buttons allow the selection of the format the date will be displayed in. The user has the choice of a short date format or a long date format. The options reflect the user's current Windows Control Panel International settings for "Short Date Format" and "Separator." The other Control Panel Date Options are ignored by NDW Time.
- (D) **Time Options** - The "Show Seconds" checkbox allows the user to indicate whether the seconds should be displayed with the current time. While this box is checked, the program updates the title bar every second. When this box is not checked, the program only updates the title bar every minute. The time is influenced by the Windows Control Panel International settings for "12 Hour" or "24 Hour" format and "Separator." The other Control Panel Date Options are ignored by NDW Time.
- (E) **OK Button** - This button ends the options dialog box and saves the changes that were made. If none of the "Display Options" check boxes are checked, the user will be reminded that at least one display option must be selected.
- (F) **Cancel Button** - This button ends the options dialog box and cancels any changes made. The title bar display returns to its previous state.
- (G) **Exit Button** - This button will close the NDW Time program. It can be used when the running icon is hidden to exit the program.
- (H) **Help Button** - This button brings up this help screen.

## **NDW Time Error Messages**

Following is a list of the messages that NDW Time will display when an error occurs:

*All Timers Are Busy!* - This message occurs when NDW Time cannot activate a Windows timer. Windows only has 16 timers available to applications. This message indicates that all of the timers are in use. Closing an application using a timer will allow NDW Time to run.

*Norton Desktop Is Not Running - Cannot Start NDW Time* - NDW Time can only run under the Norton Desktop for Windows. This message indicates that NDW Time cannot find the Norton Desktop running. The Norton Desktop does not have to be the Windows shell.

*Norton Desktop Has Closed - Closing NDW Time* - This message indicates that NDW Time can no longer find the Norton Desktop running. NDW Time closes after this message comes up.

*You Must Choose At Least One Display Option* - This message occurs when a user is in the Options Dialog Box and tries to push the OK button with none of the Display Options check boxes checked.